

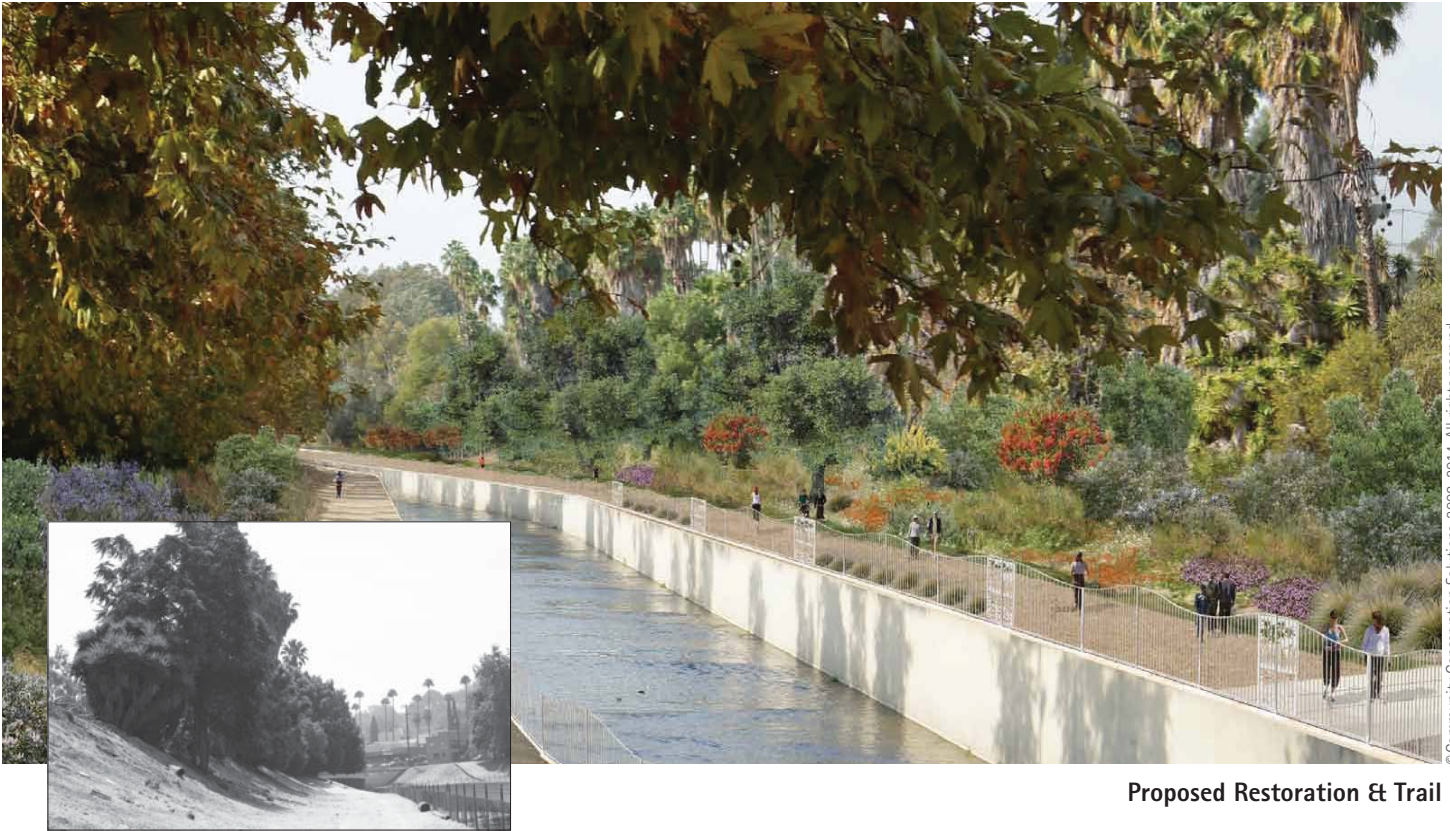


# LOS ANGELES RIVER GREENWAY TRAIL

Coldwater Canyon to Whitsett Avenue, San Fernando Valley

Creating Public Access and Restoring Native Habitat

*Solving problems where  
people and nature intersect*



© Community Conservation Solutions, 2008–2014. All rights reserved.

Proposed Restoration & Trail

Existing Conditions

## The L.A. River Greenway Trail will:

- Bridge the Gap:** Create three miles of river trail by linking existing trail segments
- Create Public Access:** Open this currently closed section of the L.A. River to the public
- Restore Native Habitat:** Plant over 4,000 native trees, shrubs and plants

## Providing Public Access to the L.A. River

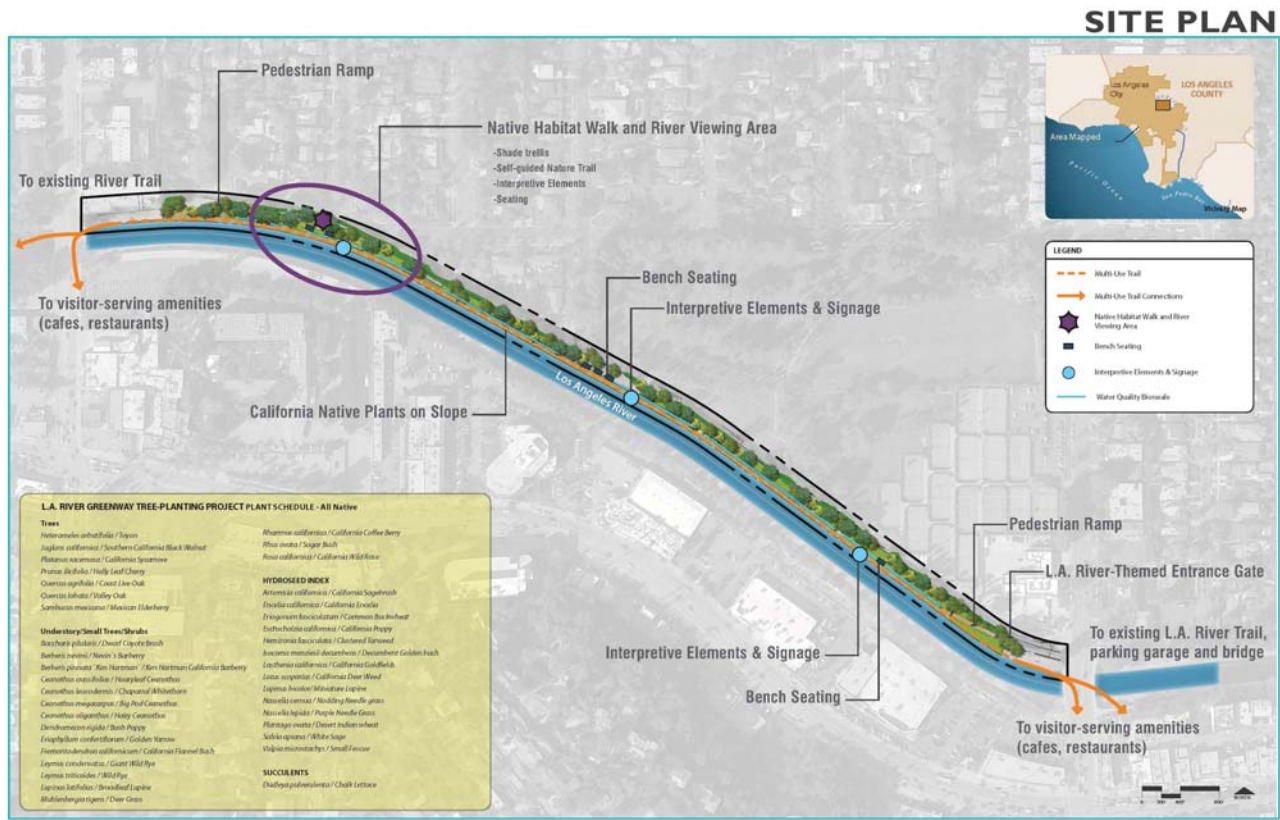
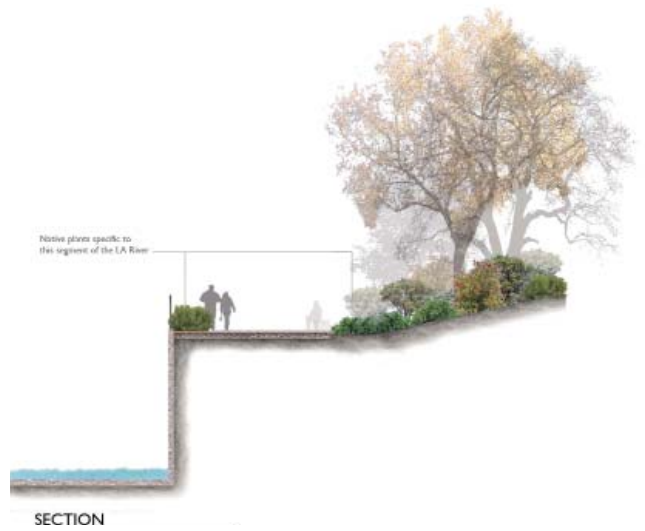
- Create half-mile walking trail to bridge the gap between existing trail segments
- Install L.A. River-themed entry gate
- Provide ample parking by linking to nearby 391-car public garage located on the river
- Link to public transit via adjacent bus stop and Metro station within biking distance
- Install river viewing and shaded seating area

[www.conservationsolutions.org/largwt.html](http://www.conservationsolutions.org/largwt.html)

Over

# Restoring Native Habitat

- Restore a native ecosystem of natural habitats
- Plant over 4,000 native trees, shrubs and plants
- Remove old, non-native trees
- Improve water quality by establishing a native forest with extensive root systems
- Create an interpretive native habitat walk



**L.A. RIVER GREENWAY TREE-PLANTING PROJECT PLANT SCHEDULE - All Native**

Trees	HYDROKID INDEX	SUCCULENTS
<i>Heteromeles arbutifolia</i> / Toyon	<i>Artemisia californica</i> / California Sagebrush	<i>Echeveria agavoides</i> / Chalk Lettuce
<i>Juglans californica</i> / Southern California Black Walnut	<i>Encelia californica</i> / California Yellowcholla	
<i>Rhus microcarpa</i> / California Sumac	<i>Eriogonum fasciculatum</i> / California Buckwheat	
<i>Prunus arbutifolia</i> / Holly Leaf Cherry	<i>Fuchsia californica</i> / California Peppery	
<i>Quercus agrifolia</i> / Coast Live Oak	<i>Hemizonia fasciculata</i> / California Groundsel	
<i>Quercus lobata</i> / Valley Oak	<i>Artemisia monardella</i> / Decumbent Golden Yucca	
<i>Sarcobatus nahuatlensis</i> / Mexican Cholla	<i>Leucostemum californicum</i> / California Goldcholla	
<b>Understory/Small Trees/Shrubs</b>	<i>Lonicera sycampsis</i> / California Deer Weed	
<i>Baccharis pilularis</i> / Coastal Coyote Bush	<i>Lupinus albus</i> / Mediterranean Lupine	
<i>Berberis repens</i> / Noveboracensis / Barbary	<i>Malva nuttallii</i> / Nuttall's Malva	
<i>Berberis pinnatifida</i> / Ken Hateron / Ken Hateron California Barbary	<i>Navia elaeagnifolia</i> / People's Needle Grass	
<i>Ceanothus leucanthus</i> / Hoaryleaf Ceanothus	<i>Phacelia ovata</i> / United States Phacelia	
<i>Ceanothus laurifolius</i> / Chaparral Whiteflower	<i>Salvia leucantha</i> / White Sage	
<i>Ceanothus megalanthus</i> / Big Bush Ceanothus	<i>Valeriana monardella</i> / Small Yucca	
<i>Ceanothus velutinus</i> / Hairy Ceanothus		
<i>Dioscorea oppositifolia</i> / Bush Peppery		
<i>Fragaria chiloensis</i> / California Strawberry		
<i>Franseria salicifolia</i> / California Flower Bush		
<i>Lycium condurcivum</i> / Giant Wild Fry		
<i>Lycium intricatum</i> / Wild Fry		
<i>Lupinus arboreus</i> / Broadleaf Lupine		
<i>Mitella pentagona</i> / Deer Grass		

**L.A. River Greenway Project** **MLA** **LAND IQ** **North East Trees**  
 Creating Public Access And Restoring Native Habitat | Studio City Between Coldwater Canyon And Whittsett, CA

## Project Partners and Funders

